

SEAT SWIVELS RANGE



Seat Swivels

VERY HIGH QUALITY ENGINEERED SEAT SWIVEL BASES CE APPROVED

As a safety critical item seat swivels are CE approved for peace of mind. You only find out how good your seat swivel is when you survive to tell the tale. Build quality of seat swivels is imperative, as it has to meet or exceed the strength of the vehicle manufacturer's design criterion for seat & seat belt mountings. Short cutting in this area is unsafe and unwise. Within the FASP, CTA and MAPA ranges are swivels engineered to the highest automotive standards to meet or exceed the requirements of the Original Vehicle Manufacturer. The swivels are fabricated from heavy gauge steel & swivel around a large central pivot. The swivel plates sandwich a special self lubricating nylon wear plate thereby making the swivel virtually maintenance free.

Fixing bolts are not supplied with FASP swivels; use the equivalent or stronger bolts to the same design as the bolts installed by vehicle manufacturer. The strength rating is usually stamped into the head of the bolt (8.8, 10.2 or 12) as well as the size (M8, M10, etc.) please ensure you use suitable bolts.

CE certification standards (a) TESTED and APPROVED according to CEE 96/38 & or 2005/41/CE. (b) HOMOLOGATED according to CEE 96/37 - 96/38

Please note Fiat Ducato, Peugeot Boxer and Citroen Relay are one and the same chassis with no differences in seat swivel installation.



Universal seat Swivel+ Ducato, Talbot Express, Citroen. Pre 1994 only 430 x 350mm. FASP
SWVL1R For RH seat
SWVL1L For LH seat



SWVL3R Boxer, Ducato, Relay, RH drivers 1994 to 2006 model year.
SWVL3L Boxer, Ducato, Relay, LH passenger 1994 to 2006 model year. Re-use seat belt mounting on seat 430 x 350mm (3R pictured) FASP



SWV3CT For LH or RH seat 1994-2006 Ducato, Boxer & Relay. CTA



X250 swivel for New Ducato, Boxer and Relay. 2006 on. FASP
SWVL7R For RH seat
SWVL7L For LH seat



X250 swivel for New Ducato, Boxer and Relay. 2006 on. CTA
SWV7CT44 For LH or RH seat H=44mm Need to trim existing seat box front cover. Or use code to get new box front below,



X250 swivel for New Ducato, Boxer and Relay. 2006 on.
SWV7CTBOX For LH or RH seat H=44mm includes new under seat cover. CTA



Under seat Cover



X250 swivel for New Ducato, Boxer and Relay. 2006 on. CTA
SWV7CT54 For LH or RH seat H=54mm Taller swivel to miss existing seat box front cover.



VW T4 swivel pre 96. Threaded pegs on seat box. 426 x 404mm
SWVL4R VW T4 pre 96 RH
SWVL4L VW T4 pre 96 LH (4R pictured) FASP



VW T4 swivel 1997 on. Bolt holes on seat box. 426 x 404mm
SWVL6R For RH seat
SWVL6L For LH seat FASP



SWVL16R For RH seat
SWVL16L For LH seat New VW T5 seat swivel 2004 on. 454mm x 464mm Drivers requires a handbrake lowering bracket to install. FASP



X250 Seat box cover fitted



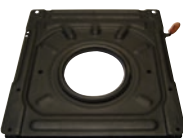
SWVL10R For RH seat
SWVL10L For LH seat New Renault Master & Vauxhall-Opel Movano Interstar 2004 on. FASP 400 x 335mm (10R pictured)



SWV10CT For LH or RH seat. Master, Movano, Interstar 2004 on. CTA



SWVL17R For RH seat
SWVL17L For LH seat New Renault Traffic Vauxhall Vivaro Primastar seat swivel 2002 on
Picture for illustration(not of product) FASP



SWVL5R Merc Sprinter 96->06 VW LT 1997 on. RH drivers.
SWVL5L Merc Sprinter 96->06 VW LT 1997 on. LH passenger. 440 x 425mm (5L pictured)



SWV5CT For LH or RH seat Merc Sprinter & LT Pre 96-06. CTA



SWV18RM For RH seat
SWV18LM For LH seat Sprinter & Crafter 06 on. MAPA

Picture for illustration(not of product)



SWVL12 Mercedes Vito. Up to 2003 425 x 350mm FASP



SWVTR00RM For RH seat
SWVTR00LM For LH seat Ford Transit 2000 on. MAPA
Picture for illustration(not of product)

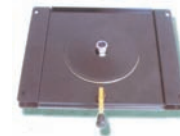


SWV13CT Ford Transit 2000 On. Left or Right hand seat. CTA



SWV15CT For LH or RH seat Iveco Daily 1999/2000 onwards. CTA

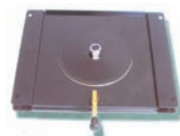
STANDARD SEAT SWIVELS
Are needle bearing standard swivels (BAS codes) to suit most seat boxes provide a lower cost alternative, while maintaining high quality engineering standards. Pressure plate technology maintains strength.



BAS1C Standard swivel + pre 94 Ducato. 425 x 355mm



BAS1C02 Standard swivel 02-06 Ducato. 425 x 355mm



BAS5C Standard swivel Merc Sprinter 96->06 / VW LT. 470 x 425mm



BAS6C Standard swivel Master, Movano, Interstar 470 x 425mm



BASTR00 Standard swivel Ford Transit 2001- 2006 and 2006 on. 480 x 470mm

SEAT SWIVEL INSTALLATION GUIDANCE

For most installations the seat swivel will be installed onto the seat box with the seat and seat runners on top of the swivel. Firstly where fitted remove the seat belt from the anchor point on rear end of seat slide. Then remove the four or six bolts holding seat to sliders and retain. Now remove the four or six bolts holding sliders to seat box and retain. Purchase from the vehicle manufacturer's main dealer four or six bolts to the same strength specification as the ones removed from the seats. Bolt the swivel onto the seat box with the original bolts used. Now bolt the seat slides onto the top plate of the swivel using the new bolts purchased. Next bolt the seat back onto the seat slides using the original bolts. Finally re fit the seat belt to its anchor point if removed. For some applications it will be the case that the swivel is installed between the sliders and the seat. This will be evident by the bolt hole positions.

WE NOW OFFER INSTALLATION SERVICE



0844 414 2324



0844 414 2425